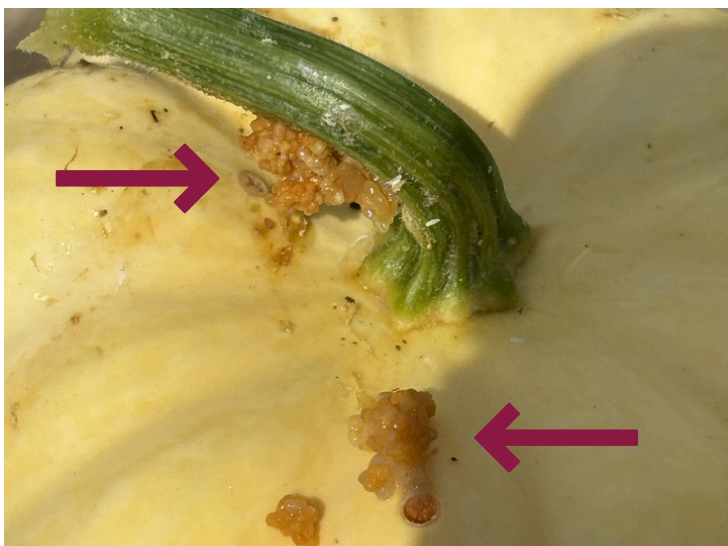


Powhatan VCE Pest Update: Pickleworm

John Few: Powhatan ANR:
johnf93@vt.edu
(804) 598-5640



Pickle worm with burrow hole (Note arrow) in Mexican sour gherkin



Frass from feeding and burrowing into pumpkin fruit

Description

Young Pickleworm larva are yellowish-white with a brown head. As larva mature, they tend to change to a green, pink, or copper color. Adult moths have a triangular body with a unique yellow splotch in the center of their wings.

Damage

Eggs are deposited a variety of plants, especially cucurbits such as pumpkin, squash and cucumber. Larva burrow into the buds, flowers, and fruit of a plant, causing major economic loss of potential and viable fruit. Larva pupate in the plant making the fruit unsellable

Control

- Planting Date: Planting in early spring helps reduce infestations
- Organic and Chemical Controls: See the 2024-2025 Mid-Atlantic Commercial Vegetable Production Recommendations for control options
 - https://www.pubs.ext.vt.edu/content/dam/pubs_ext_vt_edu/456/456-420/SPES-586.pdf